



Windows Mobile



Table of Contents

1	Introduction.....	1
2	Windows Mobile Settings Menu.....	1
2.1	<i>Accessing the Settings Menu:</i>	1
2.1.1	Personal Tab.....	2
2.1.2	System Tab.....	3
2.1.3	Connections Tab – DO NOT USE.....	3
3	File Explorer - to Locate the HotLeap Program.....	4
3.1	<i>Accessing the File Explorer Menu</i>	4
4	Cold Boot.....	7
4.1	<i>Setting Date and Time</i>	7
4.2	<i>Re-create Shortcut to HotLeap</i>	8
5	Windows Mobile On-Screen Keyboard.....	10



1 Introduction

HotLeap requires a handheld that runs Windows Mobile 4.0 or later. For this reason it is essential that the user has some understanding of the Windows Mobile operating system in order to properly use HotLeap. In this document, several key and commonly occurring steps are detailed.

For a detailed description and support documents visit the following link: <http://www.microsoft.com/windowsmobile/en-us/default.aspx>

- ⓘ **Note:** Only the steps essential for the proper operation of HotLeap will be covered in this document.
- ⓘ **Note:** The functionality of Windows Mobile is not supported by HotButton Solutions.

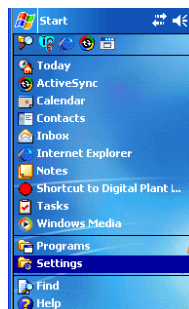
The **Settings** menu and the **File Explorer** application are two elements of Windows Mobile that a Hotleap user will need to know in order to become efficient in using the HotLeap application in Windows Mobile.

- ⓘ **Note:** The start menu Windows icon is always available on the top left side of the screen.

2 Windows Mobile Settings Menu

2.1 Accessing the Settings Menu:

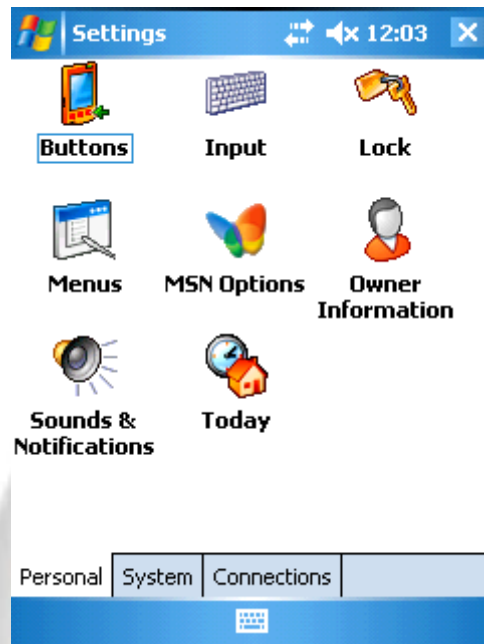
- Tap the **Start** menu icon in the top left.
- A drop down list will appear.



- Tap the **Settings** folder icon.



2.1.1 Personal Tab



- i. **Buttons – DO NOT USE.**
- ii. **Input** – Change the settings for the keyboard and keypad input options.
- iii. **Menus** – Add or remove programs in the Start Menu by checking them off. *Please note: Use only the HotLeap and File Explorer Shortcut.*
- iv. **Owner Information** – Add or change the owner information. This may be left blank.
- v. **Password – DO NOT USE.**
- vi. **MSN Options – DO NOT USE**
- vii. **Sounds & Notifications** – Adjust sound and notification settings. *Please note: Leave these settings on as they are helpful in the notification of critical issues and alarms. Only turn these off when absolutely necessary and be sure to turn them back on after.*
- viii. **Today** – Customize the home screen by selecting a picture to display (1 of 2 defaults) and select items to show on home screen (only the date should be selected).

2.1.2 System Tab




- i. **About** – Check Windows Mobile operating system version and hardware details.
- ii. **Backlight** – Change screen backlight options for longer battery life.
- iii. **Certificates** – **DO NOT USE.**
- iv. **Clock and Alarms** - Change the time, date, and time zone. **See section 3 “Setting Time” for more information.**
- v. **Error Reporting** – **DO NOT USE**
- vi. **GPS** – **DO NOT USE**
- vii. **KeyLight** – Change key light settings
- viii. **Memory** – Check for programs that are running and shut down if necessary
- ix. **Power** – Change power settings
- x. **Regional Settings** – Change regional settings such as currency, date format, and region
- xi. **Screen** – Set text and font, screen alignment, and left or right handed settings
- xii. **System Info** – **DO NOT USE**
- xiii. **USB Config** – **DO NOT USE**

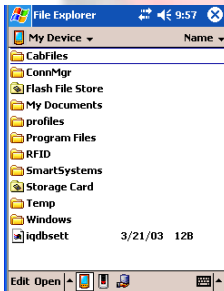
2.1.3 Connections Tab – DO NOT USE.


3 File Explorer - to Locate the HotLeap Program

After a cold boot or when the shortcut for HotLeap cannot be found in the Start Menu, use of the File Explorer tool is necessary in order to navigate to the program file located on the storage card in the Handheld.

3.1 Accessing the File Explorer Menu

- Tap the **Start** menu. 
- Tap **Programs > File Explorer**.
 - a. The screen below should come up if this is the first time running **File Explorer**.



 **Note:** If **File Explorer** has been used before then you will need to navigate back to the above page

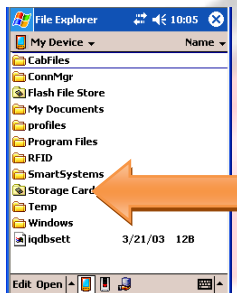
There is a drop down menu at the top of the screen that displays where the File Explorer is pointed.



My Device is the base level in which the **Storage Card** can be found. If the **File Explorer** is not set to the **My Device** folder tap the down arrow to the right of the title of the folder displayed and tap **My Device** on the top of the drop down menu.



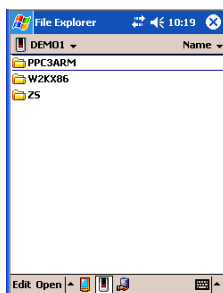
b. Tap **Storage Card** to access the contents.



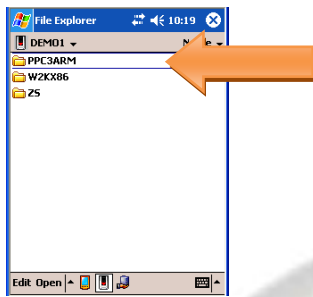
c. Select the folder containing the below folders:

Note: There may or may not be a separate folder containing the folders listed below. You may have to explore to find them; however in most cases there should only be one folder.

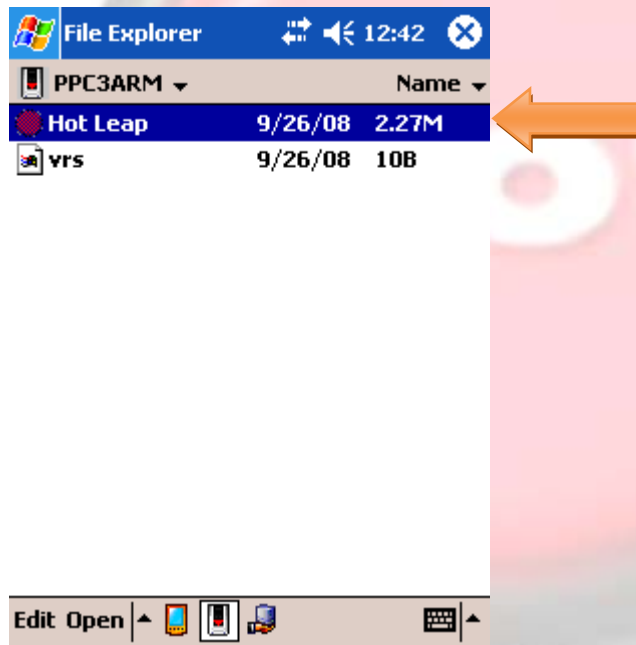
- **PPC3ARM**
- **W2KX86**
- **ZS**



d. Tap the **PPC3ARM** folder.



e. Tap on the red button icon Titled HotLeap.



This will start the HotLeap application.

4 Cold Boot

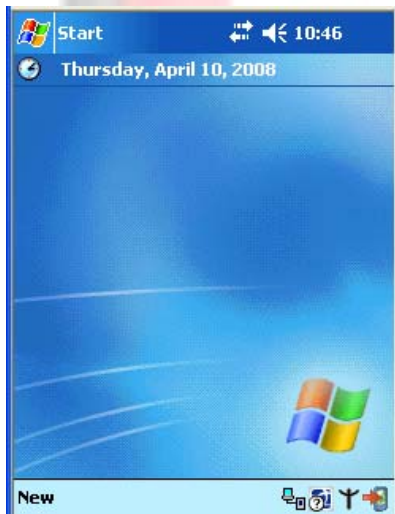
After a cold boot of the handheld device (removing battery) all custom settings will be lost including the shortcuts to the HotLeap application and the date/time.

4.1 Setting Date and Time

It is essential that the date and time are set correctly in order for all the data readings to be accurate when uploaded from the handheld. As a safety measure you will be warned by HotLeap when starting the application that the time is not correct.

There are two ways to access the screen to set the date and time.

- i. Tap the date and time on the home screen of the handheld.



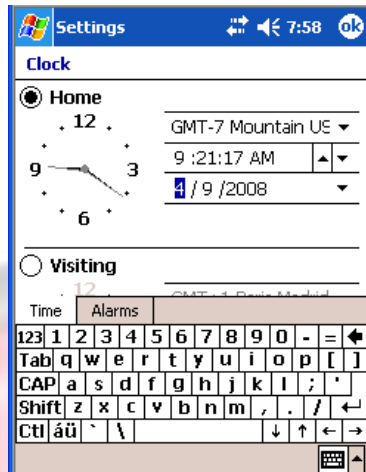
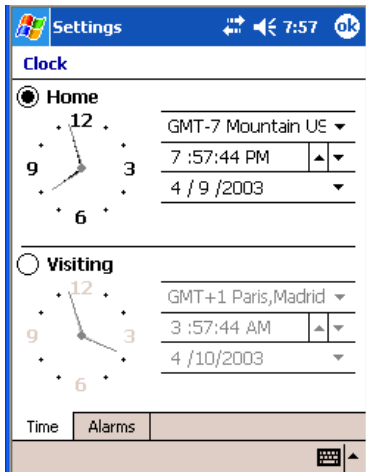
- ii. Access the clock through the Settings menu:

Start > Settings > System Tab > Clock

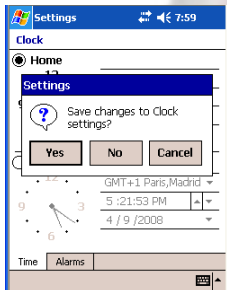
The clock setting menu will display. Set the following using the keypad on the device or the popup keyboard on the screen:

- **Time Zone**
- **Time and AM/PM**
- **Date**





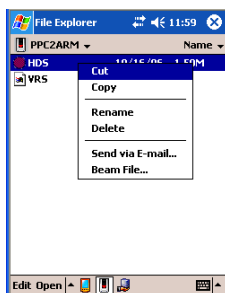
- Tap **Ok**.



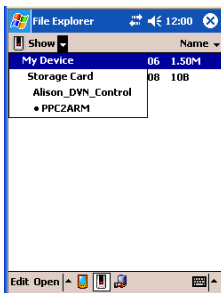
- Tap **Yes** to save settings.

4.2 Re-create Shortcut to HotLeap

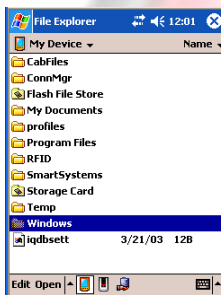
- Navigate to the HotLeap Application icon on the storage card as per previous instruction in this manual.
- Tap and hold on the HotLeap red button icon until a menu appears.



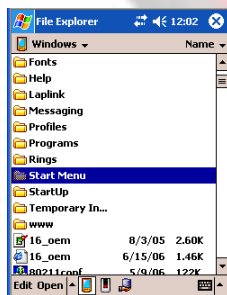
- Select **Copy**.
- Navigate back to the device level.



- Tap **Windows**.

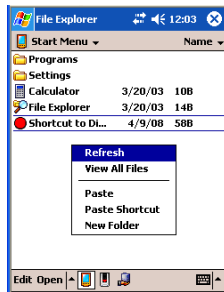


- Tap **Start Menu**.



- Tap and hold stylus anywhere until the menu below appears.





- Tap **Paste Shortcut**.

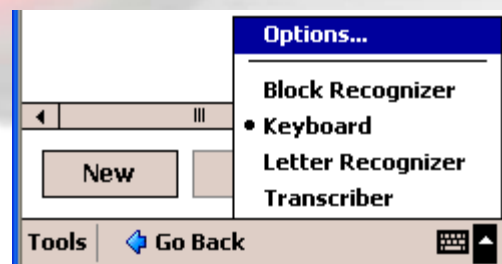
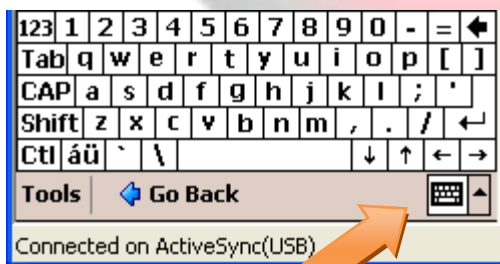
Note: Do not tap **Paste** as this will not work.

5 Windows Mobile On-Screen Keyboard

By tapping the keyboard icon at the bottom right hand side of the screen you will bring up the on-screen keyboard which can be used for entering data into fields.

There are several user options for the on-screen keyboard which can be accessed by tapping the arrow to the right of the keyboard icon.

It is most efficient to use the keyboard option for most users; however there are stylus input options as well.



Options – Set user options such as default method, key size and auto-complete.

Block recognizer – Allows user to handwrite letters or numbers using the stylus.

Keyboard – Default option with on-screen letter keys laid out the same as a desktop keyboard.

Letter Recognizer – Input natural strokes as well as those learned using the built in tutorial.

Transcriber – Write in cursive, print or mixed handwriting.

