



# Bullseye Reporting Tool

---

Version 5.0.



## Table of Contents

Bullseye Reporting .....	1
1 Starting Bullseye .....	1
2 Left Hand Tree-View .....	2
3 Export Window .....	3
4 Menu Map .....	3
4.1 File .....	3
4.2 Options .....	3
5 Readings .....	4
6 Alarms .....	5
7 Reports .....	6
8 Save as .CSV File .....	6



# Bullseye Reporting

Bullseye is a basic data viewing application that allows a user to see information being stored in the HotLeap database. Bullseye will store saved reports as a .CSV file which can then be printed or further manipulated.

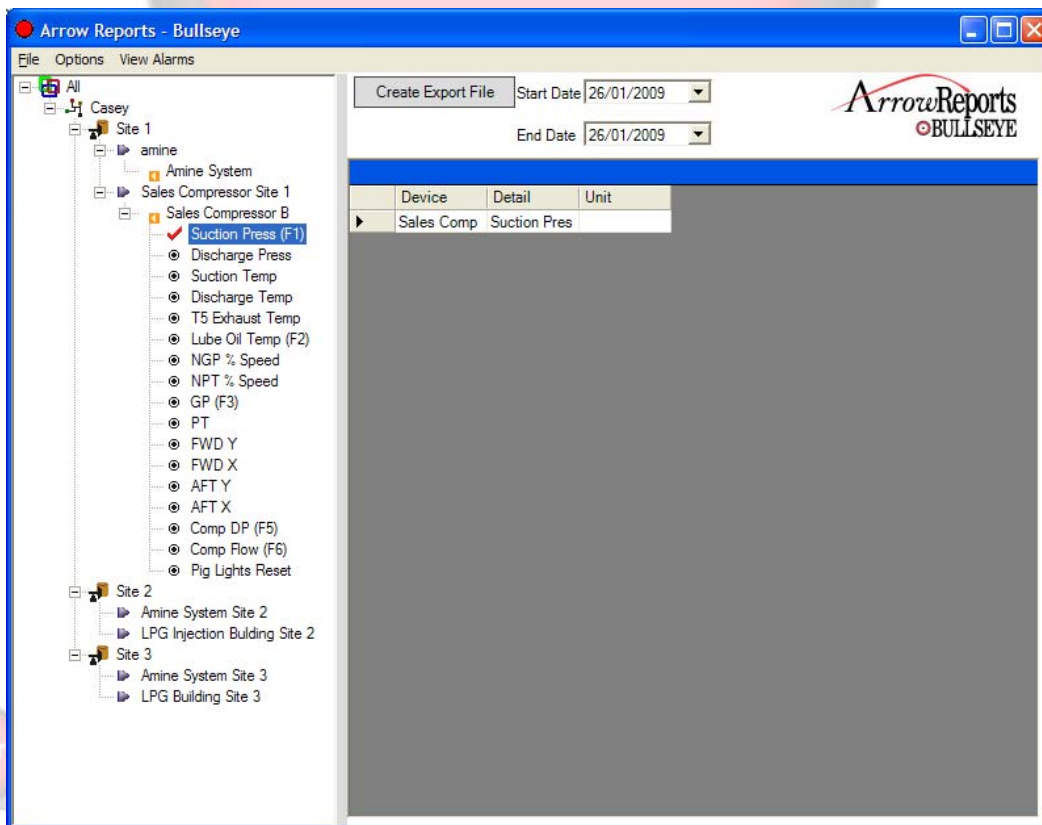
Bullseye Reports also supports Security Groups, allowing a user to login and view only the areas they are responsible for

## 1 Starting Bullseye

Bullseye is installed by default in C:\Program Files\HotButton Solutions\HBS\_Bullseye. A shortcut may be placed on the Windows Desktop as well.

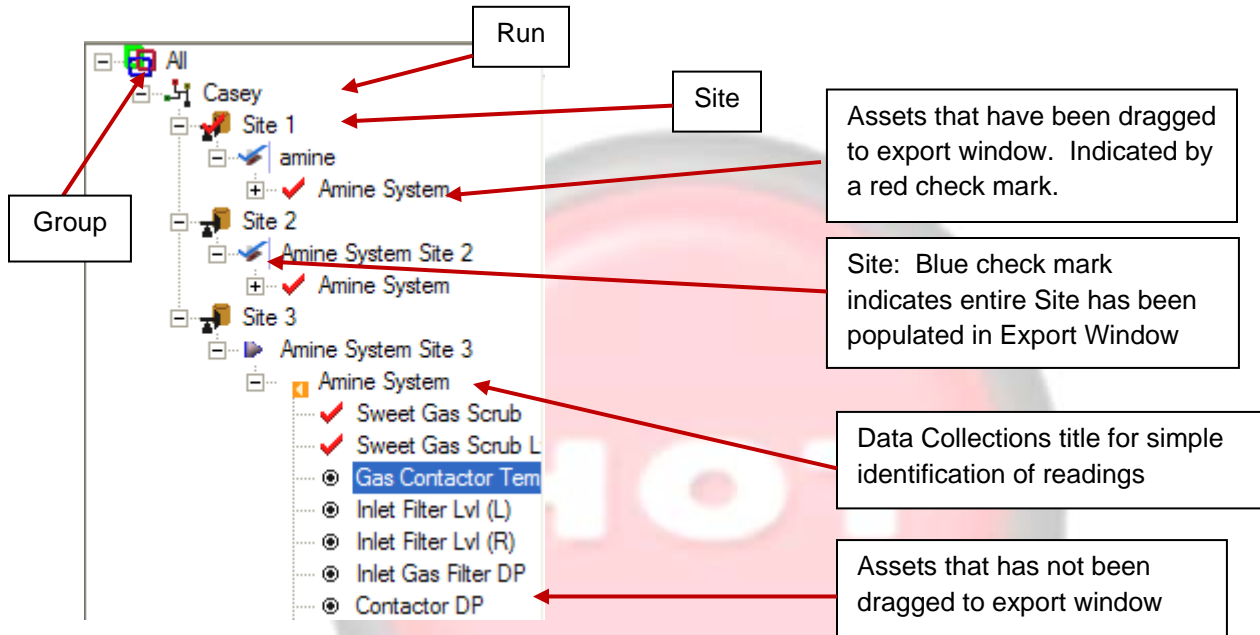


Click the **HBS\_Bullseye...** OR **HBS\_Bullseye.exe** in C:\Program Files\HotButton Solutions\HBS\_Bullseye (default location)



Bullseye is split into 2 main screens: the tree view on the left and the data grid on the right. The tree view shows the user which Assets has been setup in the system to collect data.

## 2 Left Hand Tree-View



The hierarchy from the top down is: Groups, Runs, Sites, Assets and Readings. Sites, Assets and Readings can be dragged over to the export window to populate it with data relating to the dragged item. All data displayed will be from the date range specified by the 2 date/time dropdown menus:

Start Date    
 End Date

**Note:** Bullseye has 2 main viewing options: **Readings** or **Alarms**. Readings view and Alarms view can be swapped by clicking  or  in the top menu selection. Once clicked the view will swap from one to the other. This works much like a tabbed view.



### 3 Export Window

The export window is located to the right of the tree view window.

Device	Detail	Unit	Date / Reading
West Flare S	HP KO Pum	M3	1020
West Flare S	LP Drum Le	M3	330
West Flare S	Prod Water I	K	220
West Flare S	Prod water I	M3	210
West Flare S	Salt Bath He	K	380
West Flare S	LP KO Pum	RPM	2
West Flare S	HP KO Pum	RPM	20

When populated with data it will display rows and columns as they were created in the Data Collection Templates within OrgAdmin. When no Sites or Assets have been dragged into this window it will be empty.

### 4 Menu Map

#### 4.1 File

- **New** – Create new session.
- **Save format** – Change folder where report format is saved.
- **Open** – Open existing report format.
- **Exit** – To exit menu.

#### 4.2 Options

- **Search** – Opens a search field where Assets or Reading Names can be entered.

Type the name you would like to search for.

- **Hide Blank Columns** – Hides blank or empty columns in reports.

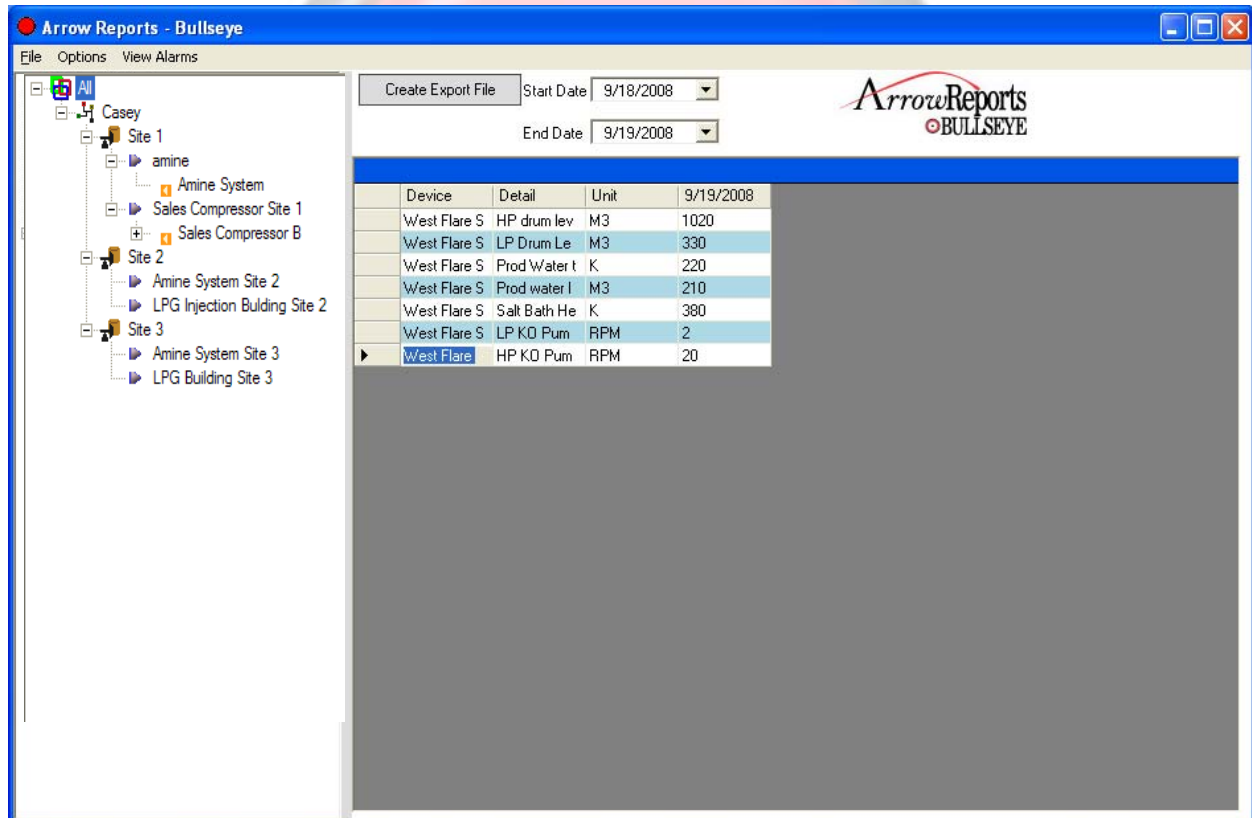
### 4.3 View Alarms/View Readings

Swap the view to or from readings only to alarms only. See sections 5 and 6 for details on each view.

## 5 Readings


Readings are the daily values entered by handheld users. When a device is dragged over to the right side, the associated data collected between the selected dates will be put into the grid.

 **Note:** Bullseye supports multiple readings per day.



Device	Detail	Unit	9/19/2008
West Flare S	HP drum lev	M3	1020
West Flare S	LP Drum Le	M3	330
West Flare S	Prod Water t	K	220
West Flare S	Prod water l	M3	210
West Flare S	Salt Bath He	K	380
West Flare S	LP KO Pum	RPM	2
West Flare	HP KO Pum	RPM	20

The right hand area displays each reading as a row with the Asset name (**Device** column), Asset Details (**Details** column), **Unit**, and the actual field entry (which can be numbers or characters depending on the Data Collection Template being used).

 **Note:** Blank columns are automatically taken out of the grid by default; however this option can be turned off in the Options menu.

## 6 Alarms

Alarms are indications that a Reading entered is outside of the specified range of acceptable values for this Asset. Click on the menu item **View Alarms** to switch to Alarm view. Un-checking this option switches Bullseye back to Reading viewing.



Date & Time	Device	Detail	Alarm Tri	Units	Operator Co	Alarm Condit	Alarm Condit	Default Alar
9/19/2008 4:	West Flare S	HP drum lev	1020	M3		100		M3
9/19/2008 4:	West Flare S	HP drum lev	1020	M3		100		M3
9/19/2008 4:	West Flare S	HP drum lev	1020	M3		100		M3
9/19/2008 4:	West Flare S	HP drum lev	1020	M3		1	90	M3
9/19/2008 4:	West Flare S	HP drum lev	1020	M3		1	90	M3
9/19/2008 4:	West Flare S	HP drum lev	1020	M3		1	90	M3

When a device is dragged from the left side tree view, Bullseye will look for Alarms relating to that Reading. If none are found a message is displayed, **No alarms were found**. Otherwise the data grid will be populated with *active* Alarms for the specified Readings.



A drop down list is activated when viewing alarms and appears below the **Create Export File** button. It offers 3 choices to choose from: **Specified Alarms**, **All in a Date Range**, and **All Active Alarms**.





- **Specified Alarms** – This is the default choice. This setting requires that you specify the date range you want to view and drag over the devices you want to view alarms on.
- **All in a Date Range** – Displays all active alarms in the system within a given date range.
- **All Active Alarms** – As the name suggests, displays all active alarms currently in the system.

## 7 Reports

Once a user has dragged over several devices to view Readings on they can save their Assets selections in a Report, which can be re-loaded later. The reports are saved in xml format in a default folder, **C:\ReportFormats**. This can be changed in the config file. Reports are only available for Readings.

## 8 Save as .CSV File

Both the Readings and Alarms being viewed in the data grid can be exported out to a .CSV file. Simply click the  button to create the file and select a location in Windows to save your .CSV report.

 **Note:** Selecting an existing file will append the new data to the end of the existing one.

Example .CSV file opened in Excel 2007:

	A	B	C
1	Device	Detail	Unit
2	West Flare Site Unit 1	HP drum level	
3	West Flare Site Unit 1	LP Drum Level	
4	West Flare Site Unit 1	Prod Water temp	
5	West Flare Site Unit 1	Prod water level	
6	West Flare Site Unit 1	Salt Bath Heater	
7	West Flare Site Unit 1	LP KO Pump Auto	